



ONCE in a LIFETIME EXPERIENCE



studio
@studiomurasaki

First Ever Music Cruise On The Largest Cruise Ship in Japan
Produced By Mighty Crown The Far East Rulaz

JULY 15th - 20th 2023 Departure / **YOKOHAMA**
 Arrival

Round Trip From Yokohama /To Jeju Island (Korea) And Kumamoto 5 Nights 6 Days on the Luxurious Cruise Ship

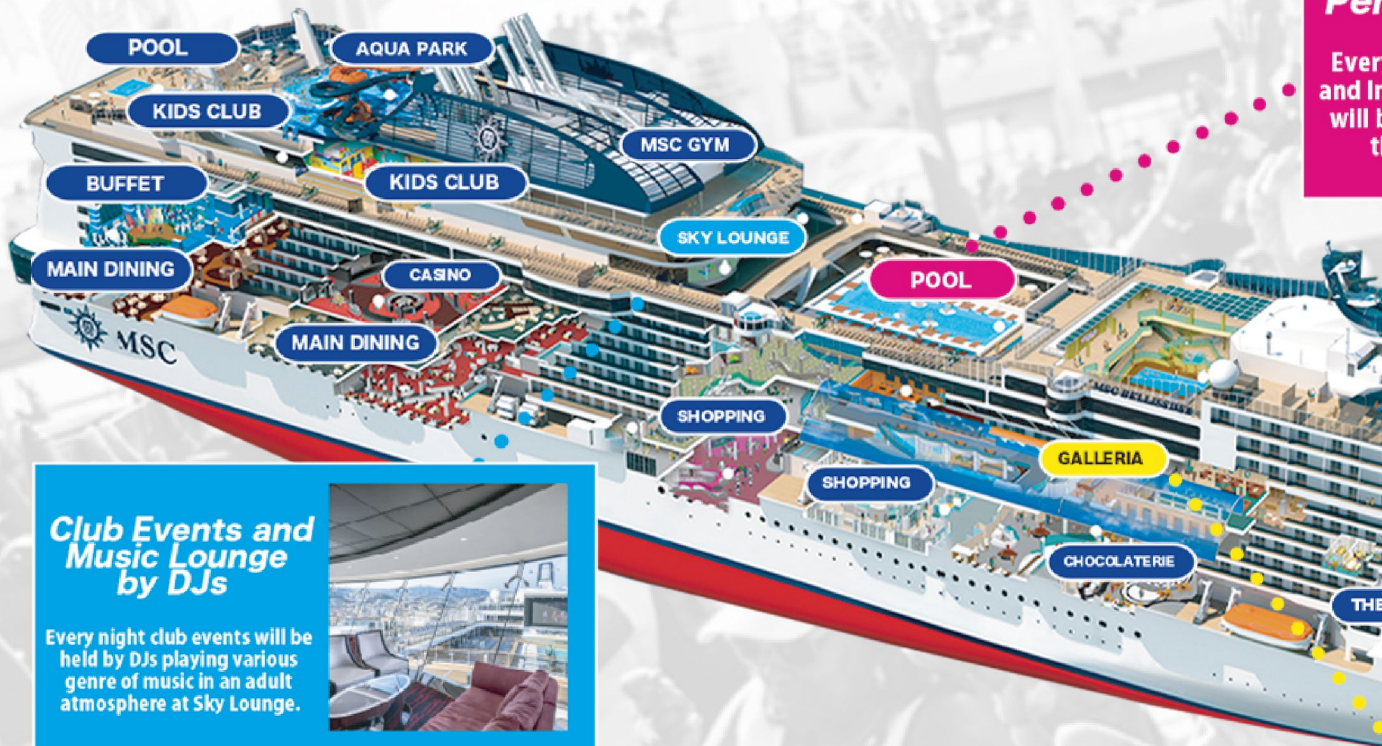
WWW.FAREASTREGGAECRUISE.COM



FAR EAST REGGAE CRUISE

First Ever Music Cruise
Round trip from Yokohama
5 Nights

Inside the ship is like a moving amusement park
which can be enjoyed all day long.



Club Events and Music Lounge by DJs

Every night club events will be held by DJs playing various genre of music in an adult atmosphere at Sky Lounge.



AQUA PARK & KIDS ROOM & SPORTS ROOM



Club Party Sounds

Japanese and International Sounds and DJ playing every night under the 80m

MAIN DINING & BUFFET & CASINO & BAR



Here / Facilities

Cruise On The Largest Cruise Ship in Japan!

Yokohama to Jeju Island (South Korea) and Kumamoto.

6 Days of Luxurious Cruise Trip

ent park

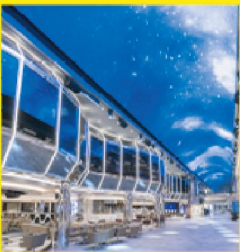
Artist Live Performance

Every night Japanese international artist will be performing on the main deck.



Party by DJ & DJs

International DJs will be performing every night with LED ceiling.



Are Some Of The Views From The Many

1 Transportation + Hotel + α = Cruise

Several places can be visited in a single cruise trip. You can enjoy activities on the ship or go on a sight seeing at the port of call during the day time and enjoy the artist live performance and parties at night. Then you can just go back to your room to sleep and the ship will be taking you to the next destination.

When you wake up in the morning, you can see the new port from the deck. One of the enjoyment about the cruise is the view from the ship changes everyday. Once you get on the ship, you don't have to carry or pack your luggage until end of the trip. Don't hesitate to open your luggage and use the closet in the cabin. Ship can be the means of transportation as well as a comfortable living space. Therefore the cruise trip is the ultimate easy going trip you can imagine.



2 All Inclusive

Transportation and accommodation are included in the fee as well as the meals, events, parties and facility fees are all included. That means going to the pool, live performance shows, and parties are all free. The price of Cruise Trip got an expensive image but as you can tell that it's not true.

Included in the cruise fee

- Meals at the main dining and buffet
- Snacks and light meal
- Pool and fitness room
- Facility Fees
- Shows, events, parties and other activities

Not included in the cruise fee

- Soft Drinks and Alcohol
- Meals at the bar
- Specialty Restaurants
- Shopping
- Casino
- Spa and Beauty Salon
- Laundry Service
- Medical Fee
- Excursion Fee
- WIFI
- ※ Port Tax and Service Charge are not included

3 Check the Daily Planner

Everyday there will be a live performance show, parties, and other various programs held inside the ship. Also the facilities inside the ship are well equipped, such as the pool, fitness gym, and theater. You will never be bored and even feel like you don't have enough time. Be able to spend your time freely on the ship is one of the attraction of the cruise trip. Everyday the Daily Planner (small pamphlet) will be delivered to your room. Schedule of all the live shows, parties and activities as well as the business hours of the restaurants and bars will be on this Daily Planner. Please go through the Daily Planner to make your trip more enjoyable.



4 Cruise Card

Cruise Card will be issued to every passenger and this will become 1) Identification Card, 2) Payment Card on the ship and 3) Key to the cabin.

● Identification Card

Function as the identification card on the ship as well as used at the security when embarking and disembarking the ship.

● On Board Payment Card

You only have to show the Cruise Card and sign for shopping, buying alcohol and even buying chips for the casino. You don't need to carry around cash on the ship. Payment used with the Cruise Card will be settled when disembarking at end of the trip. To pay your final bill with your credit card, you need to register to your account when embarking the ship.

● Key to the Cabin



5 Cabin Types

Cabins are categorized by facilities and views. There will be a cabin suitable for you according to your budget and how you want to spend the time on the ship. Most of the cabins are based on Twin or Double and here are some of the categories.

Interior (about 15m²)

Room without a window. Recommended for the people who spends the time at the public space and comes back just to sleep.

Balcony (about 17 m²)

Room with a balcony on the outside. Most popular category.

Ocean View (about 16 m²)

It is located on the outer side of the ship so it has a window. Can enjoy the sunshine and the view that changes everyday.

Suite (about 25~27 m²)

There are various types of suites with over 25 m² of space.





FAR EAST REGGAE CRUISE 2023

Live performances
DJs with
Live shows by
and club events
Come and



First ever

Music Entertainment Cruise in Japan
Produced by MIGHTY CROWN
The Pioneer Of Reggae Dancehall
Who Won 8 World Titles.



SPECIAL GUESTS from JAMAICA



BARRINGTON LEVY



BEENIE MAN



FREDDIE MCGREGOR



WAYNE WONDER



T.O.K



CHINO



RUFF KUTT BAND

OUNDS & DJS



RORY STONE LOVE 🇯🇲



TONY MATTERHORN 🇯🇲



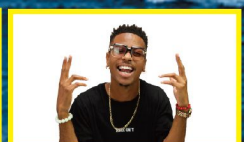
MASSIVE B / HOT97 🇺🇸



KING TURBO 🇨🇦



DYNAMQ 🇧🇪



DJ PUFFY 🇧🇪

performances by artists, sounds and will be held every night on the sea!

Japanese and International artists on the main deck
shows under the 80m LED ceiling will be held every night
experience this extraordinary music cruise trip.

MESSAGE FROM MIGHTY CROWN

We have been playing reggae & dancehall music for over 30 years and one thing we realized is that music unites people no matter your age, gender or nationality. If you never been to Japan, this is the perfect opportunity to visit and come onboard with us for the historical Far East Reggae Cruise which will be Mighty Crown's final show before going on hiatus. We will guaranty everybody that this cruise will be a once in a lifetime experience ! You already know that we do things on a different level ! Please be part of this history ! It a go maaaad !!



MASTA SIMON

ARTIST



SOUNDS & DJS



DANCERS

STREET DANCES at The Promenade

| DANCEHALL | HIP HOP | SOCA | AFRO BEATS |

CROWN JUGGLAZ

ALL NIGHT JUGGLING PARTY

BACK TO THE HARDCORE

70's 80's 90's
REGGAE/DANCEHALL PARTY

Throwback HIP HOP NIGHT

ALL WHITE Party

90's vs 2000's

Party Every Night!

30th Anniversary THE FINAL
FAR EAST REGGAE CRUISE 2023

Irish & Chin Presents

SOUND CLASH

TEAM JAPAN IN THE FAREAST TEAM WORLD

8X WORLD CHAMPION	MIGHTY CROWN	VS		TONY MATTERHORN	2X WORLD CLASH CHAMPION
2016 JAPAN RUMBLE CHAMPION	FUJIYAMA			KING TURBO	2K WORLD CLASH CHAMPION
2018 JAPAN RUMBLE CHAMPION	JAH WORKS			DYNAMOQ	2022 SOUND CLASH AT SEA CHAMPION

Technical Data
 Maiden Voyage: 2019
 Gross Tonnage: 171,598 tons
 Length/Width: 315.83m / 43m
 Decks: 19, included 16 for guests
 Crew Members: Approx. 1695

Data and information are subject to change without notice. *55 cabins for guests with disabilities and reduced mobility are included



ITINERARY

	DATE	PORT	ARRIVE	DEPART	MEAL	SHOWS
1	July 15th	YOKOHAMA	—	18:00	•Dinner	
2	July 16th	AT SEA	—	—	•Breakfast •Lunch •Dinner	
3	July 17th	JEJU ISLAND	13:00	20:00	•Breakfast •Lunch •Dinner	
4	July 18th	KUMAMOTO	9:00	17:00	•Breakfast •Lunch •Dinner	
5	July 19th	AT SEA	—	—	•Breakfast •Lunch •Dinner	
6	July 20th	YOKOHAMA	8:00	—	•Breakfast	—

Departing from Yokohama! Round Cruise trip to Jeju Island and Kumamoto



- Meals / 14 times on board (5 times in the morning, 4 times in the afternoon, and 5 times in the evening)
 - Tour conductors / We will not accompany you, but Japanese staff will take care of you on board.
 - Minimum number of participants: 1 person ■ Overnight stay on board
 - On the day of boarding, please come to the designated meeting place and take the shuttle bus to Daikoku Wharf for check-in procedures. The designated meeting place will be announced in the final guide.
- *You cannot leave the ship after boarding.

Meals, accommodation and entertainments are all included in the fee.

*Spa, casino, alcohol, and specialty restaurants are not included.

Entertainments on the sea by the artists, sounds and DJs Live shows by Japanese and International artists on the main deck and club events under the 80m LED ceiling will be held every night. Come and experience this extraordinary music cruise trip.

(Price of 1 Adult) *Port Tax and Tips are not included

Cabin	Occupancy	Double Occupancy	Single Occupancy	3rd and 4th Person who are age between 13 and 18.	3rd and 4th Person who are age over 19.	3rd and 4th Person who are age 12 and under
Interior (8th - 10th Floor)	1~4	\$1,469	\$2,563	\$368	\$735	3rd and 4th child under 12 years old is free
Interior (11th - 14th Floor)	1~4	\$1,547	\$2,719	\$387	\$774	
Ocean View (5th Floor)	1~4	\$1,782	\$3,110	\$446	\$891	
Ocean View (8th - 11th Floor)	1~4	\$1,938	\$3,344	\$485	\$969	
Balcony (8th - 10th Floor)	1~4	\$2,250	\$3,969	\$563	\$1,125	
Balcony (10th - 12th Floor)	1~4	\$2,344	\$4,102	\$586	\$1,172	
Balcony (13th - 14th Floor)	1~4	\$2,735	\$4,844	\$684	\$1,368	
Suite	1~4	\$3,438	—	\$860	\$1,719	
Suite with Jacuzzi	1~4	\$4,688	—	\$1,172	\$2,344	
MSC YACHT Deluxe Suites	1~4	\$5,079	—	\$1,270	\$2,540	

Additional Charge: Service Charge US\$12.5 per Night (Age under 3 are exempted)/ Port Tax (Paid in Advance)20,000 YEN (Age Under 2 are exempted)



•Passport is necessary to be on board.

Please prepare a passport which is valid for more than 6 months from the date of disembarkment.



•Overseas Travel Insurance

Cruise Planet highly recommend the passengers to get the overseas travel insurance. For any inquiry please contact Cruise Planet.



•Need A Roommate?

The Far East Reggae Cruise is open to solo travelers, but we are looking for a roommate. Facebook social group There is if you are interested, please use it.



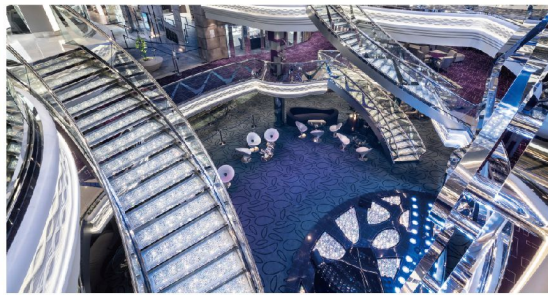
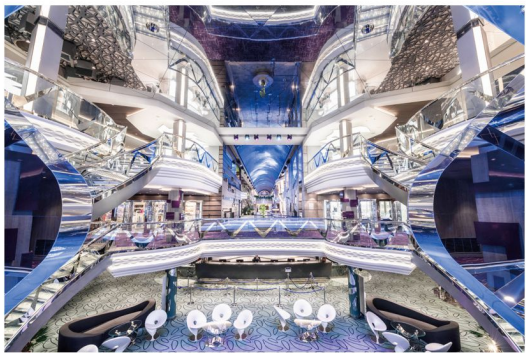
Introducing the inside of 170,000 ton class state of the art cruise ship which will bring you the extraordinary life with Stylish and High quality cruise trip.



GALLERIA VITTORIO (DECK6-7)

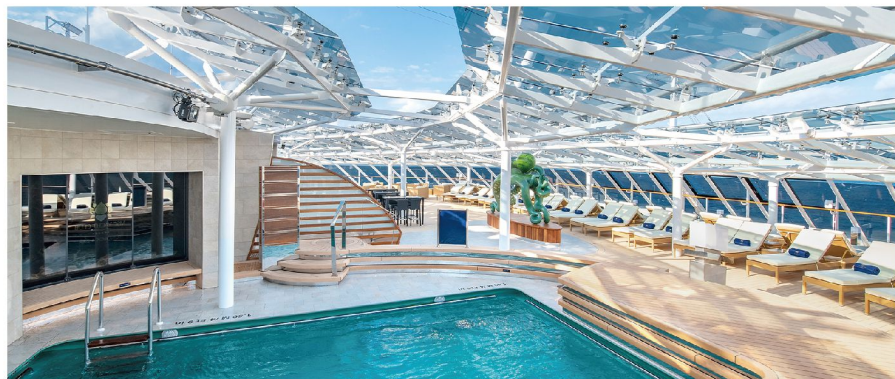
An onboard promenade with a variety of boutiques, restaurants and bars. The ceiling is a dome-shaped LED screen with a total length of 80 meters, which constantly projects beautiful images 24 hours a day. A gorgeous projection show with the latest technology will also be screened

LED SKY DOME ▶



INFINITY ATRIUM (DECK5-7)

A gorgeous lobby with a three-story atrium where the stairs filled with Swarovski crystals shine.



MSC Yacht Club

A special place where you can enjoy a higher level of service. We have a number of dedicated services such as a 24-hour butler service and a concierge desk, as well as facilities dedicated to the MSC Yacht Club.



Top Sail Lounge (MSC Yacht Club)

Inside the ship is like a moving amusement park which can be enjoyed all day long!



1 Artist Live Performance ATMOSPHERE POOL (DECK 15)

Every Night Japanese and International artist will be performing on the main deck.



3 Club Events & Music Lounge by DJs SKY LOUNGE (DECK 18)

Every Night club events will be held by DJs playing various genre of music in an adult Atmosphere at SKY LOUNGE



2 Club Party by Sounds & DJs GALLERIA VITTORIO (DECK 6)

Japanese and International Sounds and DJs will be playing every nighty under the 80m LED ceiling



IMPERIAL CASINO (DECK 7)



F1 SIMULATOR (DECK 16)

*with Charge

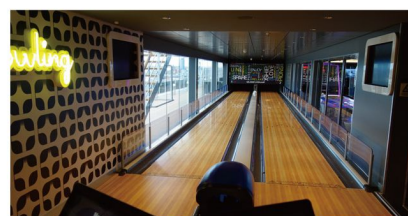


XD INTERACTIVE CINEMA (DECK 16)

*with Charge



MSC PHOTO SHOP (DECK 6)



BOWLING (DECK 16)

*with Charge

Food & Drink

There are 4 main dining room, a buffet restaurant, speciality restaurants and bars.

MAIN DINING



POSITONIA RESTAURANT (DECK 5)

The Posidonia Restaurant is open for breakfast, lunch and dinner and offers a daily changing menu.



LIGHTHOUSE RESTAURANT (DECK 6)

One of the three main dining rooms which is located at end of the ship.



IL CILEGIO / LE CERISIER (DECK 6)

BUFFET



MARKET PLACE BUFFET (DECK 15)

The buffet is open for breakfast, lunch, dinner and late-night snacks. The extensive buffet area includes various multifunction corners serving international dishes, ethnic cuisine, healthy options and a multitude of other tastes.

SPECIALITY RESTAURANT



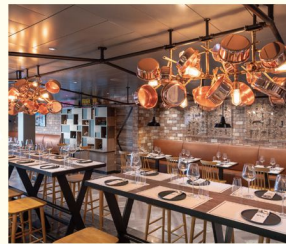
BUTCHER'S CUT (DECK 7)

The American-style steakhouse serves select prime cuts from around the world. * With charge



KAITO TEPPANYAKI & SUSHI BAR (DECK 7)

Stylish teppanyaki and sushi restaurant offering deliciously authentic Asian cuisine prepared on the spot with only the freshest, highest quality ingredients. * With charge



HOLA TACOS & CANTINA (DECK 6)

Serving Latin American food and drink in casual style. * With charge * Under renovation

CAFE & BAR



JEAN-PHILIPPE CHOCOKAT & CAFE (DECK 6)

The Chocolate Bar, where a delectable range of the finest creations as masterminded by Jean-Philippe Maury – French master-pâtissier – awaits you. *With charge

RESTAURANTS AND BARS

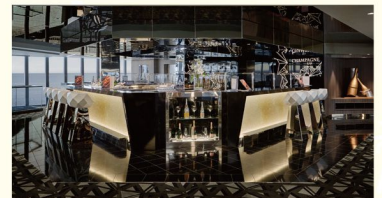
RESTAURANT	CONTENTS	DECK
POSITONIA	MAIN DINING	5
LIGHTHOUSE	MAIN DINING	6
IL CILEGIO / LE CERISIER	MAIN DINING	6
HOLA TACOS & CANTINA	LATIN AMERICAN CUISINE	6
BUTCHER'S CUT	AMERICAN STEAK HOUSE	7
KAITO SUSHI BAR	JAPANESE CUISINE	7
KAITO TEPPANYAKI	JAPANESE CUISINE	7
MARKET PLACE	BUFFET RESTAURANT	15

BAR / LOUNGE / CAFE	CONTENTS	DECK
INFINITY BAR	BAR	5
BELLISSIMA BAR & LOUNGE	BAR	6
JEAN-PHILIPPE CHOCOLAT & CAFE	CHOCOLATE FACTORY AND COFFEE	6
JEAN-PHILIPPE CREPES & GELATO	CREPES & GELATO	6
EDGE COCKTAIL BAR	BAR	6
CHAMPAGNE BAR	BAR	7
MASTERS OF THE SEA	ENGLISH STYLE PUB	7
TV STUDIO & BAR	BAR INSIDE THE TV STUDIO & STAGE	7
ATMOSPHERE BAR NORTH	BAR BY THE OUTDOOR POOL	15
ATMOSPHERE BAR SOUTH	24 HOUR BAR	15
ATMOSPHERE ICE CREAM BAR	ICE CREAM BAR	15
SPORTS BAR	DRINKS AND HOT DOG	16
ATTIC CLUB	NIGHT CLUB AND DISCO	18
SKY LOUNGE	PIANO LOUNGE AND BAR	18
HORIZON BAR	BAR BY THE SUN DECK	18
ARIZONA BAR	ICE CREAM BAR	19



MASTER OF THE SEA (DECK 7)

Traditional English style pub. *With charge



CHAMPAGNE BAR (DECK 7)

Carries over 20 different types of Champagne. * With charge



TV STUDIO & BAR (DECK 7)

Programs are broadcasted to the room from here. Also there are spaces for Karaoke and live shows. * With charge

ROOM SERVICE



Continental breakfast can be delivered to your room for free. * Other than breakfast, there will be a delivery charge except for the passengers in MSC Yacht Club.

* All the photos are sample images. Photos of the facilities include from other sister ships. Food shown on the photos might not be served.

Sports & Beauty

Playing at the pool and relaxing at the spa, there are a lot of fun things to do all day long.

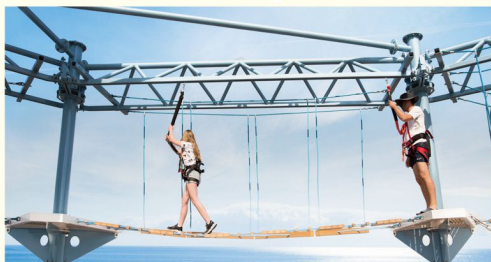
ARIZONA AQUA PARK (DECK 19)

There are 3 thrilling water slides, the Himalayan Bridge which winds around the back of the vessel more than 80m above the sea and the aqua spray area for small children. Both adults and children can enjoy together.



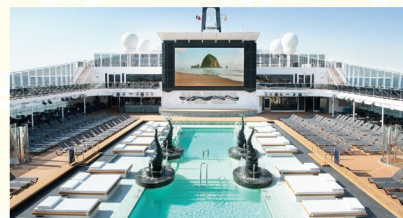
WATER SLIDERS

*Must be older than age of 7 and taller than 107cm.



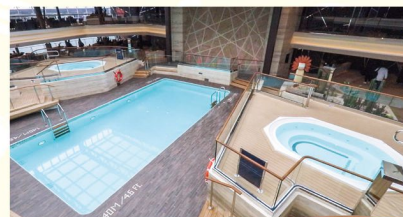
THE HIMALAYAN BRIDGE

*Must be older than age of 7 and taller than 122cm.



ATMOSPHERE POOL (DECK 15)

Poolside space on MSC Bellissima is some of the most plentiful to be found at sea.



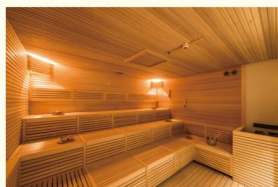
GRAND CANYON POOL (DECK 15)

The Grand Canyon Pool, with a retractable roof, which consists of a pool with two large hot tubs on both sides.

AUREA SPA (DECK 7) * With charge



THERMAL ROOM



SAUNA ROOM



MASSAGE ROOM

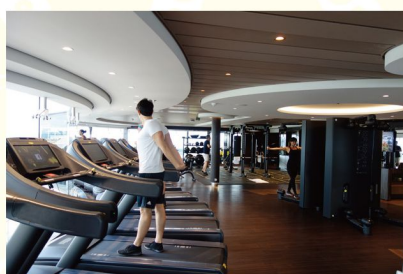


HAIR SALON



SPROTPLEX (DECK 16 & 18)

The large and spacious amusement park provides a large arena where guests can play sports and games during the daytime.



MSC GYM POWERED BY TECHNOGYM (DECK 16)

Equipped with state-of-the-art Technogym cardio and strength-training equipment, the gym offers a wide range of innovative fitness courses and training programs.

SPORTS AND BEAUTY

MSC AUREA SPA	CONTENTS	DECK
AUREA SPA RECEPTION	RECEPTION DESK	7
HAIR SALON	BEAUTY SALON	7
MAKE UP	BEAUTY SALON	7
COSMETIC & SPA SHOP	BEAUTY SHOP	7
JEAN LOUIS DAVID SALON	HAIR SALON	7
NAIL SALON	MANICURE AND PEDICURE	7
MASSAGE AND TREATMENT	MASSAGE AND FACIAL TREATMENT	7
MEDI SPA CENTRE	ANTI-AGEING TREATMENT	7
SOLARIUM	TANNING MACHINES	7
THALASSO ROOM	SEA WATER THERAPY	7
THERMAL ROOM	SAUNA AND JACUZZI	7

SPORTS AND FITNESS	CONTENTS	DECK
FITNESS CLASS	VARIETY OF CLASSES ARE AVAILABLE	7
ATMOSPHERE POOL	OUTDOOR POOL	15
GRAND CANYON POOL	INDOOR POOL	15
HORIZON POOL	OUTDOOR POOL	16
MSC GYM	FITNESS CENTER	16
POWER WALKING TRACK	328m long walking track	16
SPROTPLEX	A SPACIOUS RECREATIONAL SPACE	16-18
ARIZONA AQUA PARK	WATER SLIDERS AND PLAY GROUND	19
SOLARIUM	JACUZZI FOR ADULTS ONLY	19

* All the photos are sample images. Photos of the facilities include from other sister ships.



FAR EAST REGGAE CRUISE

Kids & Family

With a packed program of sports, games, competitions, parties and more, your children will enjoy endless discoveries with their new friends.



CHICCO BABY CLUB (DECK 18)

For ages 0-2

Our partnership with leading baby care brand Chicco provides a dedicated play area with facilities.



MINIE CLUB & JUNIOR CLUB (DECK 18)

For ages 3-11

The club offers games, events and activities like Arts & Crafts to free their imagination and make every day special enriched by the stimulating toys of our partnership with LEGO®.



YOUNG CLUB

For ages 12-14

& TEEN CLUB (DECK 18)

For ages 15-17

Young Club holds the promise of new experiences, with a dedicated programme of sport tournaments, hi-tech games and lots of other fun activities. Teen Club activities range from sports and competitions, dance contests and social network games to Wii, Xbox and PS4 tournaments.



MSC mascot character DoReMi and LEGO® character.



FACILITIES FOR KIDS

KIDS AND FAMILY	CONTENTS	DECK
CHICCO BABY CLUB	Produced by CHICCO for ages 0 to 2	18
MINI CLUB	Produced by LEGO for ages 3 to 6	18
JUNIOR CLUB	Produced by LEGO for ages 7 to 11	18
YOUNG CLUB	Area for ages 12 to 14	18
TEENS CLUB	Area for ages 15 to 17	18
DoReMi LABO	Tech Labo for KIDS	18
DoReMi STUDIO	Theater for kids and family	18



FAR EAST REGGAE CRUISE

Shopping

This 90m central promenade GALLERIA BELLISSIMA is filled with boutiques with over 200 top brands for shopping.



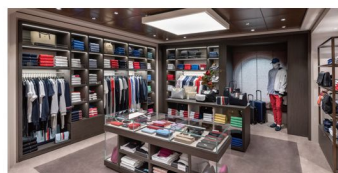
BVLGARI



SWAROVSKI



MSC SHOP (DECK 6)



BOUTIQUE (DECK 6)



GALLERIA BELLISSIMA

SHOPS

SHOP	CONTENTS	
BOUTIQUE	MEN'S/WOMEN'S/CHILDREN APPAREL	6
FASHION JEWELRY	FASHION / JEWELRY	6
FINE WATCHES AND JEWELRY	FINE WATCHES AND JEWELRY	6
LUXURY VETRINA	LUXURY BRANDS	6
MINI MALL	CIGARETTE, ALCOHOL AND SNACKS	6
MSC SHOP	MSC BRAND MERCHANDISE	6
PERFUMES AND COSMETICS	FRAGRANCES AND COSMETICS	6
WATCHES AND SUNGLASSES	FASHION WATCHES AND SUNGLASS	6
THE GALLERY	LUXURY JEWELRY	7



PLAZA BELLISSIMA (DECK 6)

Plaza Bellissima consists of several shops located adjacent to Galleria Bellissima.

*Duty free products are sold only outside of Japan's territorial water.

* All the photos are sample images. Photos of the facilities include from other sister ships.



FAR EAST REGGAE CRUISE

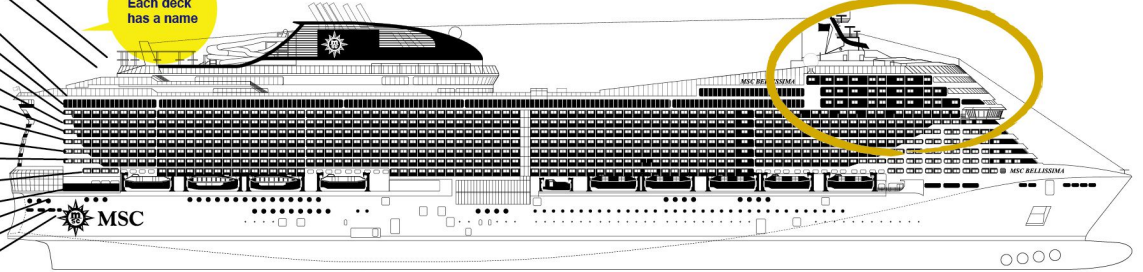
CabinPlan

- DECK 19 SPLENDIDA
- DECK 18 DIVINA
- DECK 16 SEAVIEW
- DECK 15 PREZIOSA
- DECK 14 WORLD CLASS
- DECK 13 MAGNIFICIA
- DECK 12 GRANDIOSA
- DECK 11 BELLISSIMA
- DECK 10 SEASIDE EVO
- DECK 9 SEASIDE
- DECK 8 MERAUVIGLIA
- DECK 7 FANTASIA
- DECK 6 MUSICA
- DECK 5 OPERA
- DECK 4 LIRICA

There is no deck 17 because it's an Italian ship

Each deck has a name

MSC YACHT CLUB



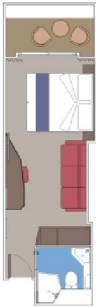
Highly recommended cabin is Balcony

The balcony cabin is highly recommended for the first timer. You can relax looking at the view of the horizon from the spacious room or enjoy the breakfast on the balcony while feeling the breeze from the ocean.

Barcony

17m²
Balcony and shower

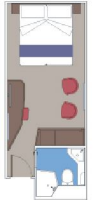
1-4 Persons



INTERIOR

15m² Shower

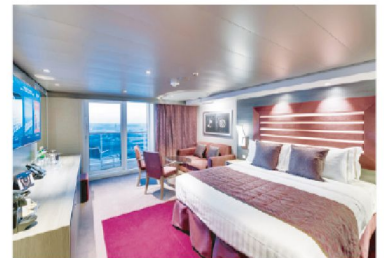
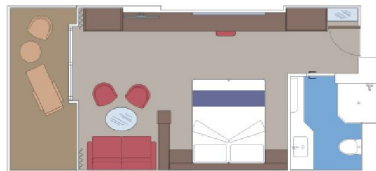
1-4 Persons



YACHT CLUB

26m² + Balcony with large shower

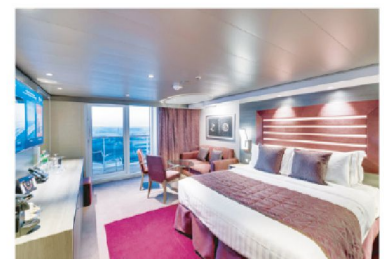
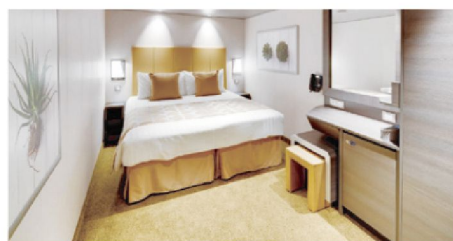
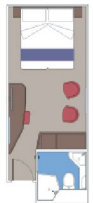
1-4 Persons



INTERIOR

15m² Shower

1-4 Persons



Amenities included in all cabin types

Wardrobe / Towels / Interactive TV / Telephone / Internet Access (for a fee) / Mini Bar / Safety Box / Hand and Body Soap / ZOE (The very first virtual cruise assistant exclusive to MSC Cruise.)

*All the beds in the cabins are double bed which can be converted into 2 twin beds. *There are types of cabin for guests with disabilities and reduced mobility. *Layout and size of the cabin might slightly differ even though they are in the same category *Size of the room does not include the size of the balcony *For the room with 3 or 4 guests, either sofa bed, pull out bed or bunk bed will be used. *There are some rooms where the view of the ocean might partially blocked by the outside facilities such as Tender Boat. Some balcony cabins uses metal balustrade instead of transparent balustrade which might cause poor visibility.

One of the best part of the cruise trip is that various activities are held in and out of the ship, like events taking at various places on the ship, excursion trip and shopping. It will be fun to schedule your day by using the Daily Planner.



MORNING

Exercise or relax in your room

You can just relax in your room but for the people who wants to wake up by excercising, you can do yoga or walk on the deck while feeling the sea breeze.



BREAKFAST

The atmosphere of your choice

Wide variety of food and freedom to treat youelf as much as you want at the buffet. At the main dining, the waiter will be serving in a more calm atmosphere. Also you can order a room service and eat on the balcony while looking at the ocean.



DAY TIME

You would be never bored all day long

You can enjoy an excrusion trip, sight seeing and shopping in Jeju Island (South Korea) and Kumamoto (Japan). Various activites and events will be held all day long on the ship too. Either you want to be active or just relax, you will be full filled on the ship.

For The Active People

Sight seeing and shopping in Jeju Island (South Korea) and Kumamoto (Japan)
Facilites and amenities on the ship



● Jeju Island



● Kumamoto



● Shopping Mall on the ship



● Aqua Park



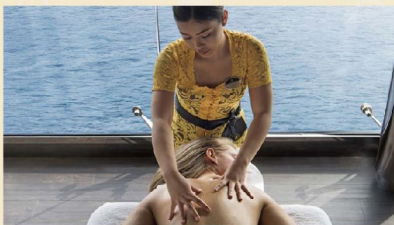
● Water Sliders



● Kids Club

Relaxation

MSC Bellissima is enriched with relaxation and healing services.



● MSC Aurea Spa



● Thermal Area

DAY CARE

Day care service is availbale so adults do Not need to worry about their kids.





DINNER

Enjoy the full course dinner

On Fareast Reggae Cruise, you can enjoy a full course dinner in your usual casual attire. 4 main dining room, buffet and also speciality restaurants (for extra charge) offer a mouth watering variety of international cuisines with a different menu selection every day and signature dishes by star chefs.



NIGHT

Live performance on the main deck

On the main deck (Atmosphere Pool) live performance produced by Mighty Crown will be held every evening. Enjoy the live shows performed by the top Jamaican Artists and Japanese Reggae/Dancehall Artists.



Live Band Show



● MIGHTY CROWN



● BARRINGTON LEVY



● Freddie McGregor



● BEENIE MAN



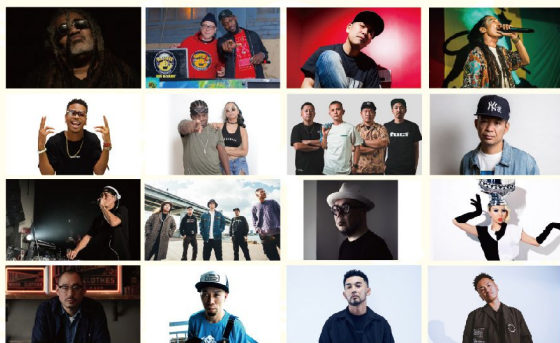
● Wayne Wonder



LATE NIGHT

The Night Continues

After the live show on the main deck (Atmosphere Pool), club parties will be held at the promenade (Galleria Bellissima) with 80m LED screen ceiling and Sky Lounge performed by International and Japanese sounds and DJs every night. Also there are variety of stylish bars, lounge and casino to suite every taste.



● Galleria Bellissima



● Sky Lounge

BARS & CASINO



Casino will open once the ship is out of the territorial waters of Japan. There are roulette, card games and slot machines for beginners too, so come experience the thrill of gambling on the sea.



MSC Bellissima boasts a variety of stylish bars and lounges to suit every taste. So whatever the moment, whatever your mood, you'll always find the ideal place to relax and enjoy a refreshing drink,



FAR EAST REGGAE CRUISE

Let's Get Onto The Ship!

On Board Experience

Preparation is also fun part of the trip. By preparing well, the trip can be safe and enjoyable.

PREPARATION

PASSPORT

Please bring a valid passport with more than 6 month left till the expire from the date of disembarkation. In case you need a visa at the destination, please acquire the visa by yourself.



BOARDING PASS CRUISE DOCUMENT

It will be sent out by email before the departing date. Your passport number, emergency contact, documents needed to submit, onboard guidance, luggage tags, and other necessary information will be on the cruise document. Please do not forget to bring to the ship.



PREPARING THE LUGGAGE

You should pack clothes, toiletry, house hold medicine, sun protection goods, chargers, and rain gears. Also remember to leave some space in your luggage for the souvenirs. If you have any chronic diseases, it is recommended to bring your prescription. Food and beverages are not allowed to bring on board.

Useful Items

Washing Line / Clothespin / Detergent

Laundry service on the ship will cost extra charge, so it will be handy if you need to do a quick laundry.

Something to put on top

Even though the port call might be warm, inside the ship and out on the deck at night might be chilling.

Sandal

Sandals are useful going to the pool or when going out of the room for a bit.

BOARDING

CHECKING IN THE LUGGAGE

Please put your name tag on all the luggages before arriving to the port. The checked in luggages will be brought to your cabin but please keep your boarding pass, valuables, and anything you need to use right away when you board (such as medicines, cameras and etc.) with your hand carry luggages.



CHECK IN

Please submit the boarding pass, passport, health questionnaire and any other necessary documents at the check in counter to process your boarding.

IMMIGRATION AND CUSTOM

Need to clear the immigration and custom at the port terminal. If you have anything to declare to the custom, please fill in the form and submit to the custom. Once you clear the immigration you can not go back to the terminal.

SECURITY CHECK

For the safety, all the hand carry luggages are scanned through the X-ray scanner and the metal detector. Heating devices such as iron, electric pot, hair dryer and weapons such as knives are not allowed on board.

PREPARATION



CREDIT CARD

Credit card can be registered to your account at the front desk or machines installed inside the ship.

CRUISE CARD

Cruise card will be used as the payment card on the ship as well as the key to your cabin and identification card. Therefore please keep it handy with you during the whole trip. Please do not keep it close to the mobile phone or other devices with a strong magnetic force, it might destroy the data inside the card.

CABIN

After entering to your cabin, please check if there is any problem with the shower, toilet, safety box and etc. Please contact the crew or the front desk for the problem.



GUEST SERVICE COUNTER

It is located close to the front desk. Please visit us if you have any questions, money exchange, lost & found and checking out your account.

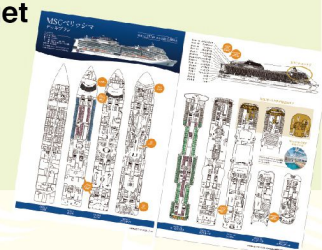


EVACUATION DRILLS

Emergency evacuation drills will be held at least once on the ship. It is mandatory for all the passengers to participate under the International Law. When you hear the emergency siren, please go back to your cabin immediately and follow the instructions on the cabin door and evacuate to the designated area.

EXPLORING THE SHIP

Once the evacuation drill is finished and unpacked your luggages, let's explore the ship using the Daily Planner and the map to get to know your way around and discover your favorite spot, restaurants and bars.



DEPARTING

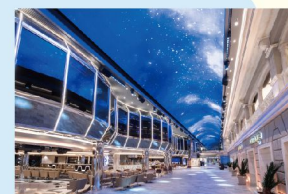


There will be a ceremony before the ship depart from the port by the local people depending on the port. While viewing from the deck, you will hear the whistle from the ship and see the people waving at the port when the ship start sailing away.



DEPARTING FROM THE PORT

There are 3 seating for the dinner at the main dining and the time is designated to each cabin randomly. From the evening, there will be a live performance by Japanese and International Artists at the main deck and after the show there will be party at the Promenade and Sky Lounge by DJs and Sounds till the morning.



What is cruise travel like? What should I do if I get sick... Answering questions and concerns for first-time users

Q1 Booking Procedures



A 1:Booking

Please fill in the necessary information on the booking page on Far East Reggae Cruise website and pay the deposit within a week.

Necessary Information

- Name and date of birth of all the passengers boarding
 - Type of Cabin
 - Address and phone number of the representative
- *According to the regulation of the cruise company, a passport which is valid for more than 6 months from the date of disembarkment is required. *Please fill in with the exact name used in the passport, if not the reservation can be invalid. *For the passengers from abroad, please check with the embassy or consulate of the countries visiting during the trip regarding the visas.

●Appicates Name and changing or correcting the name

Please fill in with the exact name used in the passport. If the name is misspelled, it will cost 10,000 JPY to reissue the ticket with the correct name.

2 : Completion of the travel contract

Travel agency will contact you via email once your reservation request is processed. Application, Invoice, Comformation and any information before boarding will be sent out via email. Please fill in the application and email back to the travel agency. Please make the payment by the deadline mentioned on the invoice.

*The contract will not be completed until the payment is made.

3 : Payment

Invoice will be sent via email. Please check the content and make the payment by the deadline mentioned on the invoice.

Q7 Payment system and currency used on the ship

A Currency used on the ship is US Dollar

Once you get on board, the Cruise Card is used as the key to the cabin, identification card and the payment card on the ship if you register your credit card to your account. During the trip all the payments on the ship are made by the Cruise Card. Also you can deposit cash into the Crusie Card the amount you want to use on the ship and the balance will be returned on the final day of the trip at the front desk.

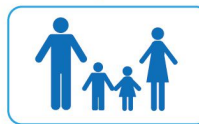
Q9 Is it allowed to bring alcohol onto the ship? Is smoking allowed?

A Food and alcohol are not allowed to bring onto the ship except for food for the baby or infant. Smoking is not allowed on the ship except at the designated smoking area. Cabin, balcony and other places are not allowed to smoke (including E-Cigarette) unless there is a sign says "Smoking Allowed" with an ash tray.

Q2 Booking for children

A Reservations are required for all children participating, regardless of age. Please be sure to make a reservation for the number of people including children. No co-sleeping.

Example | 1 Room (2 Adult + 2 Children)



When full price for 2 adults are paid per cabin

Child who is 12 and under are FREE

▶ The price of third and fourth person depends on the age. Free for 12 and under, age from 13 to 18 it will be 25% of price of 1 adult and 19 and over will be 50% of price of 1 adult.
▶ Port tax and service charge are needed for all the passenger over age of 2.

Q3 Safety Protocol

A There will be a security check similar to the ones in International Airport to enter the ship. Only the registered passengers are allowed to be on board. There will be an emergency drill for all the passengers. Cruise route will change depending on the latest weather for the safety. For COVID-19 countermeasures as of today (November 2023) a proof of vaccination or PCR negative certification is required but this is subject to change according to the Covid-19 Guideline set by the Japanese Government.

Q4 Does the ship sway a lot?

A Does the ship sway a lot?
It all depends on the weather but usually will not sway that much. Computerized FIN STABILIZER on the ship will prevent from swaying side ways. But in case of unexpected bad weather, the ship might and if you are worried about getting sea sick, it is recommended to bring a medicine or band to prevent motion sickness,

Q5 Is there any medical facility?

A Minor injuries and sickness can be treated on the ship for a charge. For severe injuries such as bone fracture or the need of surgery, helicopter will take you to the nearest hospital. In this case large amount of fee will be charged, therefore getting an overseas travel insurance is highly recommended.

Q6 What languages are used on the ship?

A English is the primary language used on board. Since the ship is owned by European company, some of the crew members can speak Italian, German, French and Spanish. Also the cruise trip depart and return to Japan, there will be some crew members who speak Japanese.

Q8 Is a tip mandatory?

A It is not necessary to tip a crew member personally. There will be a service charge automatically added to your account.

Q10 Is there internet access on the ship?

A You can buy "MSC Internet Package" on the ship to use the WiFi. The price will differ depending on the number of devices that can be connected and the amount of data which can be used.

Q11 What is included in the travel fee?

A Accommodation, meals, facility fees, transportation fee for the ship, various activities and shows are included in the fee. Speciality restaurants, certain drinks such as alcohol, spa, and casino are not included.

Q13 What kind of meals are included in the fee?

A Meals at the main dining and the buffet are included in the fee. For extra charge there are speciality restaurants, bars and cafe. *If you have an allergy, please inform us by 50 days before the departure and we will inform the cruise company but we can not provide a special meal. Please check with the waiter on board.

Q15 What should I wear on a cruise?

A There will be no dress code but we recommend you to wear a proper attire suited to the situation.

Q17 Do you have an installment plan?

A Please contact the credit card company you will be using.

Q12 Can a single person can go on the cruise?

A Although the price of the cabin is based on double occupancy, certain cabins have single use plan. Please check the price list.

Q14 What kind of shows will be held?

A Every night live band show will be held on the main deck and after the show the shopping mall with 80m LED screen ceiling will turn into a club until the morning. For details please follow and check the official SNS and website.

Q16 Is it enjoyable for children? Is there a child fare?

A There are 5 KIDS CLUB for different ages on board from babies to teens of 17 just dedicated for children. There are areas produced by LEGO GROUP and also there are family oriented activities and programs available. Cabin is based on double adult occupancy and 3rd or 4th person who are 12 and under in a same cabin are free. Please check the price list for details. *Cabins for 3 or 4 people are limited. *Port tax and service charge apply to all the passengers over age of 2.

Q18 Are pets allowed on the ship?

A No pets are allowed except for properly trained and certified guide dog. Please inform us when you make the reservation.



Safety Measures Set By The Travel Agency

When applying

- Maximum occupancy of the ship is decided by the guidelines by the country.
- In case the passenger as well as the family members who have a fever over 37.5°C or had physical disorder such as malaise, dyspnea within 14 days of departure, the passenger will be denied boarding onto the ship.
- The government request either all of the members or 1 representative from the group to register their e-mail address.

Boarding

- The check in time is divided in several sections to avoid congestion.
- On the boarding day, there will be a body temperature check and please fill in the questionnaire about your health.

On the ship

- Please wear a mask in the public area and might limit the number of people in certain area to avoid congestion.
- When coming to the front desk, please come with only one representative from the group.
- There will be a sanitizer on the bus for the excursion, please sanitize your hand.
- Passenger who does not follow our staff's instructions or interfere their duties, passenger might be denied to get on board.

Travel Agency Staff on board

- All the staff on board are vaccinated at least 3 times.
- All the staff will be practicing infection control by wear mask and sanitizing their hands.
- Measuring the body temperature and maintain good health everyday.

※ They are the safety measures by the travel agency and MSC Cruise as of October 2022. It is subject to change depending on the condition. Please contact the travel agency for the latest update.

Safety Measures Set By MSC Cruise

Preventing Congestion

- By designating the meeting time to avoid the congestion at the terminal.
- Limiting the number of passengers on board.
- There will be signs in various places on the ship encouraging passengers to wear a mask.

Hygiene Control

- Inside the ship will be sterilized by using high level disinfectant.
- Hand sanitizers will be located in various places.
- Air inside will not be circulated and always ventilating a fresh air from the outside.
- The filters used for air conditioning system at the medical center are specially made for hospital use.

Inspection

- Infection test devices will be stationed on the ship and the test will be carried out in case Covid-19 is suspected.
- Thermography cameras are installed in various places on the ship and the body temperature are measured. (Person over 37.5°C will be denied boarding or will be taken to the isolated cabin)
- All the crew members have taken Covid-19 (SARS-CoV-2) vaccine at least twice and will take the infection disease test before boarding.

Contingency

- Cabins in a certain area will be used as an isolation room and passenger who are suspicious of COVID-19 and the close contact people will be isolated into these cabins.
- We will cooperate with the health department of the country or the port to make the decision of disembark or to isolate the passenger with COVID-19.

Travel terms and conditions

Meals : During the cruise, 14 meals are served on board (5 breakfasts, 4 lunches, 5 dinners)

Tour leaders : Tour leaders are not provided. The ship's crews will take care of the guests on board.

Minimum number of passengers : 1 * The tour may be cancelled due to local and/or Covid-19 situations and/or when requested by the government of Japan and/or Korea.

Scheduled vessel : MSC Bellissima

Dress code : Casual (subject to change)

Embarkation and disembarkation information

#On the day of embarkation/disembarkation

· For checking in, valid passport, Cruise ticket, and credit card (to set up onboard account) are required. For more details, please refer to the final document. · Failure to check in by the final check in time will result in cancellation of the tour without refund. · On Each Port Calls, The Disembarkation Process Usually Takes 2-3 Hours After The Ship Arrival. The guests are advised to plan the after-disembarkation schedule accordingly (allowing sufficient time). · Embarkation at the Port of Yokohama On the embarkation day, guests are requested to arrive at the Yamashita Pier Bus Terminal or Daikoku Pier Cruise Terminal at the designated time Written On The Cruise Ticket As Of Today. Pax Must take antigen test 3days by themselves before the embarkation day and provide negative Certificate at the check in. Arrival time for each guest will be announced along with the final document. Passengers are not allowed to leave the ship once onboard on the embarkation day.

· Disembarkation at the Port of Yokohama Disembarkation takes place at Daikoku Pier. * Subject to change depending on the Covid-19 situation.

#MSC Voyagers Club membership Customers shall acknowledge that the membership benefits do not apply to this charter cruise.

* To earn MSC Voyagers Club points, please refer your membership number at the time of booking.

#Rooms Guests cannot request specific rooms or placement or location of the rooms (e.g., the rooms which are next to each other).

#Meals Basic meals (at buffet restaurants) and Main Dining are included in the cruise fare. Light snacks are also available in various areas including cafes. For MSC Yacht Club guests, various meals and snacks are provided at any time. Breakfast and lunch are open seating (on first come first served basis). * The guests who have food allergies are required to inform the ship via travel agent at the time of booking or before 50 days prior to the departure, and further to report to the waiter as soon as convenient after boarding the ship. Please note that special meals will not be prepared for the customer. * Subject to change depending on the Covid-19 situation.

#Smoking policy Smoking (including electric cigarette) is not permitted in all areas of the ship including cabin balconies except for the designated outdoor smoking areas. If a guest is in violation of this smoking policy, cleaning fee will be levied. Repeatedly smoking in non-smoking areas can ultimately lead to disembarkation.

#At ports of call The passengers can embark and disembark at each port by simply showing the cruise card. Meals are provided on board. Meals ashore are not included in cruise fare. Final boarding time is usually 30-60 minutes before the departure. Please check the final boarding time on board.

#Shore excursions Optional shore excursions will be available for purchase. Details to be announced later.

#Other expenses In the event of schedule change or cancellation of the trip, the passenger shall remain responsible for any costs or expenses incurred by the passenger (e.g., for individually arranged transportation, accommodation, or tours, and cancellation fees related to them).

#Denial of boarding The following passengers are subject to denied boarding:

- (1) Passengers using clinical respiratory devices such as oxygen cylinders and oxygen concentrators, as it is extremely difficult to provide appropriate medical care on board.
- (2) Passengers who have entered or exceeded their 24th week of pregnancy at any time during the cruise (by the end of cruise). Passengers who are less than 24 weeks pregnancy are requested to provide designated document and notify the ship in advance.
- (3) Babies under 6 months old of age.

#Schedule change The information provided on this site is the latest information as of October 26, 2022. Passengers may not be allowed to enter the port and/or disembark at the destinations including in Korea, depending on the local situation and/or requested by the government. The itinerary including ports of call, arrival/ departure time, onboard events program is subject to change without prior notice. * Onboard health and safety protocols will be carefully confirmed and implemented in accordance with the Covid-19 situation. For this reason, cruise schedule and/or onboard events may be changed or cancelled due to the local and/or the Covid-19 situations and/or other circumstances.

Please also acknowledge that:

- Guests under the age of 18 at the time of sailing must be accompanied by guardian in the same room.
- Special offers and/or benefits may be cancelled without any notice. Please check the final information on board, which will be provided on embarkation day. Customers shall acknowledge that no refund or adjustment will be made for any service alterations.
- Means of transportation and scheduled times are subject to change. The vessel is also subject to change.
- The itinerary and routing are subject to change depending on the weather and sea conditions.
- Please refer to more detailed information (available from your agent) before booking.
- **Passengers are requested to travel with the passport valid for at least 6 months following disembarkation. It is the guest's responsibility to obtain any necessary visas for all applicable ports and to comply with all customs requirements. Regardless of their nationalities, passengers are responsible to check with the appropriate consulate or immigration office for specific requirements. Without appropriate documents, a guest may be denied boarding. Cruise Planet is not held responsible to any guest for such denial of boarding or disembarkation.**
- **Babies under 6 months old, and passengers who have entered 24th week of pregnancy at the time of embarkation are denied boarding. Passengers under 20 years old on the day of embarkation are not allowed to travel on their own. Guests under the age of 20 must be accompanied by a responsible adult in the same room.**
- Passengers who are less than 24 weeks pregnant at the time of disembarkation are requested to provide medical certificate in advance.
- Passengers who intend or need to take medical treatment and/or attention and/or special assistance during the voyage are requested to provide medical certificate in advance.
- As this is an agent organized tour which uses a vessel in departing and returning to Japan, MSC cancellation policy is applied. It differs from the cancellation policy to be applied when travel abroad is via air.
- Customers are advised to purchase the travel insurance which covers cruise cancellation fee at the time of booking.
- * The tour is subject to change or cancellation depending on the future situation and/or situations of immigration control and/or the request from administrative and/or local authorities.

Cancellation Fees

- 120-90 days prior to the initial sailing date: 15% of the total cruise fare per person
- 89-60 days prior to the initial sailing date: 30% of the total cruise fare per person
- 59-31 days prior to the initial sailing date: 50% of the total cruise fare per person
- 30-0 days prior to the initial sailing date: 100% of the total cruise fare per person
- No appearance at the time of sailing or cancelled on or after the initial sailing date: 100% of the total cruise fare per person

Reservations

- * Please note that after registering through reservation system, the name cannot be changed (including to change the order of last and first names or to make spelling corrections).
- * Your reservation is not final until you receive a reservation confirmation from us.



WWW.FAREASTREGGAECRUISE.COM

旅行企画 実施  クルーズ旅行なら、安心の専門店へ。

 株式会社クルーズプラネット

観光庁長官登録旅行業第1739号 © JATA正会員  旅行業公正取引協議会会員

日本発着ツアーセンター

☎ 03-6685-7878 〒102-0083 東京都千代田区麹町1-10-5 澤田麹町ビル4階

https://www.cruiseplanet.co.jp